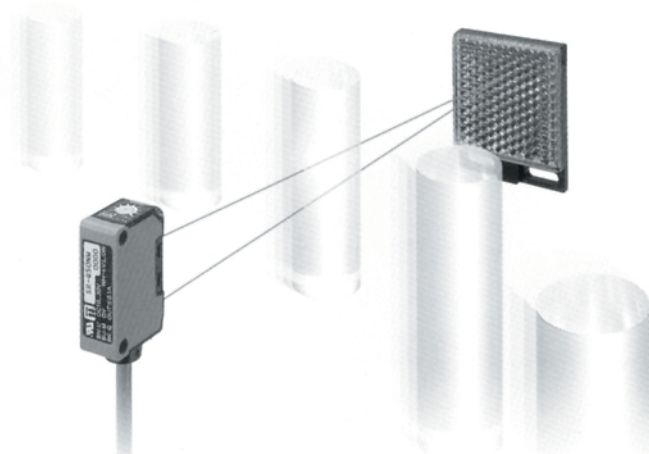
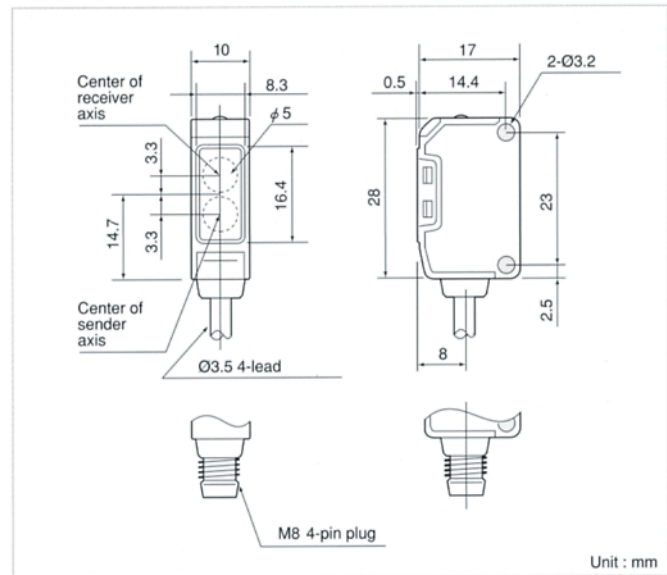


SR-Q series



Designed specifically for the detection of TFT, glass bottles or any transparent object. IP67 rating for use in washdown applications, also 100G shock resistance for use on conveyors where there may be some vibration.

Dimensions



Specifications

Type		SR-Q Series	
		Cable Type	M8 QD Type
Model Number	NPN	SR-Q50NW	SR-Q50CNW
	PNP	SR-Q50PW	SR-Q50CPW
Sensing Range		500 mm (with V-61 reflector)	
Supply Voltage		10 ~ 30 VDC incl. 10% ripple	
Current Consumption		30 mA	
Response Time		0.5 msec. max.	
Control Output		NPN or PNP Open Collector Transistor, 100 mA / 30 VDC Max.	
Operation Mode		Selectable Light-On or Dark-On operation (wiring)	
Light Source		Red LED	
Sensitivity Adjustment		Single turn potentiometer	
Indicators		Output (Red)	
Noise Resistance		JIS: C4525 500V, IEC: IEC801-2,3,4 Level 3	
Ambient Temperature		-25° to +55°C	
Ambient Humidity		35 - 85% RH	
Light Immunity		Sunlight: 10,000 lux, Incandescent Lamp: 3,000 lux	
Vibration Resistance		10 - 55 Hz. amplitude 1.5mm, X-Y-Z for 2 hours	
Shock Resistance		Approx. 100 G, X-Y-Z axis 3 times on each	
IP Protection		IP67	
Material		Case: PSF + PBT, Front cover: PMMA	
Accessories		Mounting Bracket, Reflector (# V-61)	

Note: Cables are not included with the QD sensor, please order separately.